

Dear WCLL Families,

Happy New Year 2024 and Welcome back to Semester 2! We are thrilled to welcome our students back to school on **Tuesday, January 2, 2024**. I trust you've enjoyed a wonderful Winter Break with family and friends.

We welcome two new and returning faculty and staff members. Teachers continue to prepare classrooms for changes to our instructional programs. We are also equally very grateful for our amazing school engineering staff as they continue to work during Winter Break getting our school in pristine condition.

WCLL promotes Ambitious Instruction, in particular explicit instruction. Teachers will add IXL Reading skills in classes this semester. IXL is a reading and mathematics skills program that readies student with strong reading skills. We will practice schoolwide reading and writing skills during the months of January and February.

In addition, the school dress code requires all students to dress appropriately. The following attire is inappropriate to wear to school and must not be worn. Inappropriate attire includes pajamas, blankets, slippers, crop tops, t-shirts w/profane language, head gear, hoodies can be worn, but not over heads, sunglasses, ski masks, or violence images. As classes fully open for in-person learning we need to take precautions to ensure our school remains healthy and safe.

Students will be issued 2023-24 Spring Student Handbook before the end of January 2024.

Dates to Remember

January 15, 2024 – Dr. Martin Luther King Holiday - No student attendance

January 29-31, 2024 – Schoolwide Student Writing Days

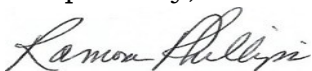
February 16, 2024 – K48 Record Day/PD Day for High School Teachers

February 19, 2024 – Mid-Semester Break – No student attendance

March 14th and 19th, 2024 - Spring Parent Teacher Conferences

This school year, partnering with parents and guardians is top priority to ensure productive and safe learning experiences for all children. Parents and guardians are encouraged to stay connected by creating a login to the parent portal (mpsmke.com/parentportal).

Respectfully,



Dr. Ramona Phillips
Administrator
Wisconsin Conservatory of Lifelong Learning (WCLL)

SAVE THE DATE! KINDERGARTEN ENROLLMENT FAIR

Will your child turn 3, 4, or 5 by September 1, 2024? It's time to think about kindergarten! Kindergarten Enrollment for Fall 2024 will begin Saturday, February 3, 2024, and will kick off with an enrollment fair at South Division High School.

Mark your calendar to attend the Kindergarten Enrollment Fair on February 3, 2024, from 9:00 A.M. to 12:00 P.M. Details will follow soon.



If you have any question please feel free to call me :

Your Parent Coordinator
Ms. Douglas
414-304-6861 or douglae@milwaukee.k12.wi.us



THE DISTRICT ADVISORY COUNCIL (DAC)

The next District Advisory Council meeting takes place on Thursday, January 4, 2024 at 6:00 p.m., via Zoom. All DAC meetings are held on the first Thursday of the month. Each school must have two official representatives on the council who are family members of students or community members. Please reach out to your representatives and encourage your families to attend!

Join Zoom Meeting:
<https://milwaukeemps.zoom.us/j/89791600841pwd=a2x2YUFGbHMxcFRxYzZ0L084eTNhdz09>

Meeting ID: 897 9160 0841
Passcode: 140111

Find your local number:
<https://milwaukeemps.zoom.us/u/kciUjjI3bM>

More information is available on the MPS DAC webpage. Contact Cacy Masters, family and community engagement associate, with any questions at <https://masterc@milwaukee.k12.wi.us/>



Dear WCLL Families,

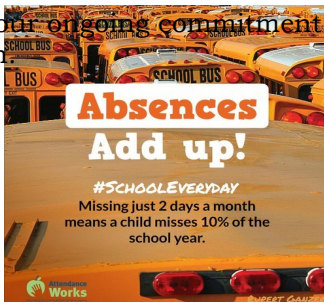
As we embark on a new school year, we want to express our heartfelt appreciation to all our families who have consistently demonstrated a strong commitment to ensuring their children's attendance and punctuality.

Your dedication to establishing positive habits surrounding attendance and punctuality at the beginning of this school year has not gone unnoticed. We understand the effort it takes, and we commend you for recognizing the significance of these habits in shaping your child's future.

Every school day matters, and your efforts to prioritize attendance send a powerful message to your child about the value of education. Establishing these habits early on will not only positively impact their current academic progress but will also instill a sense of responsibility that will benefit them throughout their lives.

We understand that unforeseen circumstances may arise, and we appreciate your communication and collaboration in such situations. If there are exceptional circumstances that may affect your child's attendance, please reach out to us so that we can provide the necessary support. As we navigate this school year together, let us continue to work hand in hand to create an environment where every child feels supported and encouraged to achieve their full potential. We are grateful for your partnership and look forward to a successful and fulfilling academic year.

Thank you for your ongoing commitment to your child's education.
Best Regards,



TAKE OUR BUDGET SURVEY

Help address the funding shortfall for public education! Students, families, staff, and community members are invited to take part in a survey to aid decision making. Access the survey at

<https://mpsmke.com/budgetsurvey>

Wisconsin public schools are facing budget concerns because of insufficient state funding. Had state funding kept pace with inflation, MPS would have more than \$210 million in additional support annually. Also, students with disabilities, who make up 19% of the MPS student population, are significantly underfunded by the state by at least \$50 million annually.

Questions and feedback can be submitted to Budget25@milwaukee.k12.wi.us



Save the date! The 2024 Daddy/Daughter Dance is right around the corner!

Mark your calendars for Saturday, Feb. 17 as we celebrate fathers, daughters, and father-figures at the 19th edition of this classic Milwaukee event.

- Date: Saturday, Feb. 17, 2024
- Where: North Division HS Community Center
- When: 5-8 p.m.
- Dinner & Dance Option: \$30 per adult, \$10 first child, \$5 each additional child

Dance Only Option - \$20 per adult, \$5 each child (limit three children per adult) <https://web2.myvscloud.com/wbwsc/wimilwaukee.wsc/search.html?display>

Adult registration includes a complimentary photo. Doors open at 5 p.m. for pre-registered dinner & dance guests only. Dinner will be served from 5:15-6:15 p.m. Doors open at 6:15 p.m. for dance guests only.